

High-power fanless PoE switch  
(24GE PoE+4\*10G SFP L3-managed)

Quick Setup Wizard

# Content

<b>1</b>	<b>Product Introduction</b>	<b>1</b>
1.1	Overview	1
1.2	Product Feature	1
1.3	Board Diagram	2
1.4	Specification	3
<b>2</b>	<b>Installation</b>	<b>4</b>
2.1	Shipping List	4
2.2	Installation Precautions	4
2.2.1	Safety Precautions	4
2.2.2	Installation Requirements	5
2.2.3	The Requirements of Electromagnetic Environment	6
2.3	Installation Way	6
2.3.1	Rack Installation	6
2.3.2	Workbench Installation	8
2.3.3	Wall-hung Installation	8
2.4	Cable Connection	9
2.4.1	Device Connection	9
2.4.2	Configuration Cable Connection	9
2.4.3	Power Cable Connection	9
<b>3</b>	<b>Function Configuration Guide</b>	<b>10</b>
3.1	Computer Requirements	10
3.2	Set up Network Connection	10
3.3	Web Page Configuration Guide	11
3.3.1	Start and Login	11
3.3.2	One-key smart introduction	12
3.3.3	Change Language	16

# 1 Product Introduction

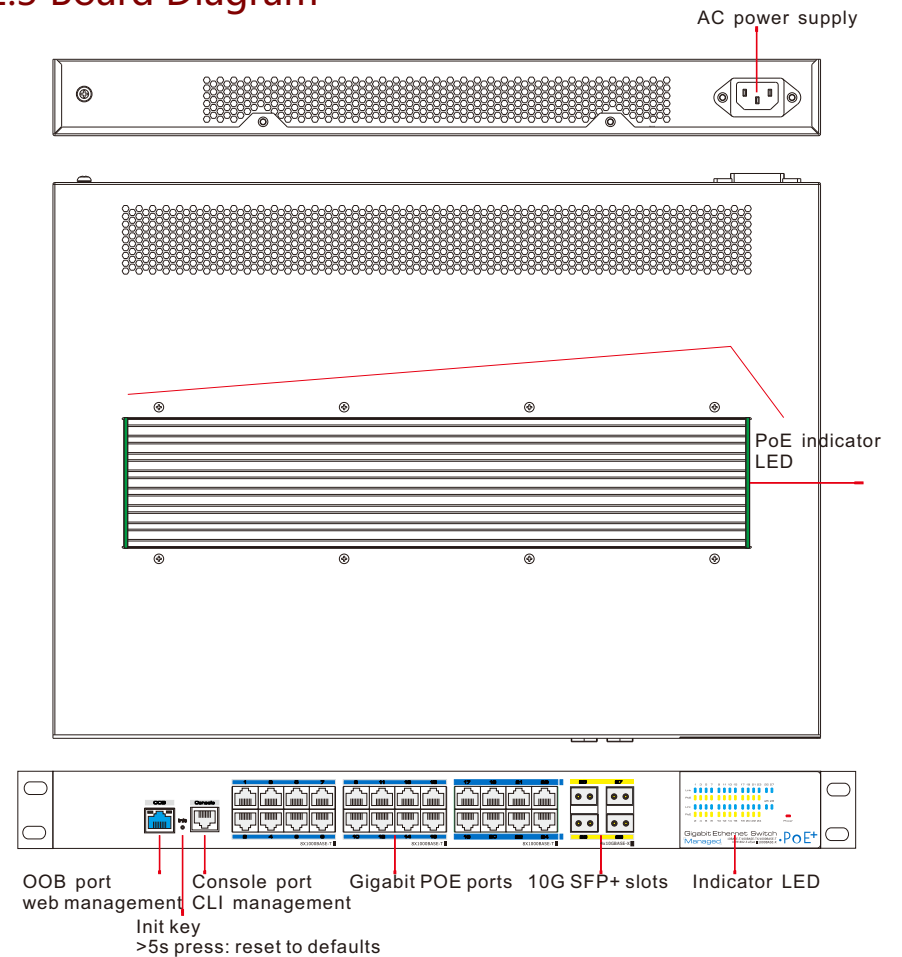
## 1.1 Overview

The High-power fanless PoE switch(24 ports gigabit PoE L3-managed),which provide 24\*10/100/1000 RJ45 ports,4\* 1000/10G uplink SFP slots ,supports fanless high-power PoE output, support static layer-3 routing network management, 4\*one-key smart mode and PoE management . The Products are widely used in security surveillance, network engineering projects, especially in low noise surround such as hotel, office, hospital and so on.

## 1.2 Product Feature

- Provide 24\* PoE Gigabit downlink Ethernet ports , 4\* 10Gigabit uplink SFP ports ;
- 350W high-power PoE output fanless;
- Provide 4\*one-key smart mode, one-key CCTV, one-key LOCK, one-key RING, one-key ONLINE;
- Provide static layer-3 routing network management and PoE management by simple operation;
- Support PoE indicator LED;
- Support high-speed data forwarding, very suitable for large flow of video data forwarding in security surveillance;
- 19-inch rack-mountable design;

## 1.3 Board Diagram



### Instruction

- (1)The PoE indicator LEDs on up-case:  
Green: PoE output power 0%~70%;  
Yellow: PoE output power70%~80% ;  
Red: PoE output power 80%~100%

(2)Using 1 to 28 port enter web-management by default; if using the OOB port, you should set it on web-management. More details are in the page 9.

## 1.4 Specification

Item		PoE switch
Power	Power Supply	AC power supply
	Voltage Range	AC 100~240V 50/60Hz Auto-sensing
	Consumption	Self consumption:30W, PoE output:350W max
Connector	Ethernet Port	Copper ports: 10/100/1000Mbps adaptive RJ45 ports support IEEE 802.3 af/at
		SFP ports: 1000/10GBase-X SFP port (Mini-GBIC)
	Console	1*RJ45-R232 serial port(115200,8,N,1)
	OOB Port	1*10/100Base-TX RJ45(It only to web management; and it is closed default, enable it in web management; default IP:192.168.2.200 user: admin password: admin)
Network Switch	Network Standard	IEEE802.3、IEEE802.3u、IEEE802.3ab、IEEE802.3Z、IEEE802.3ae、IEEE 802.1Q IEEE 802.1p IEEE 802.3ad、IEEE 802.1D、IEEE 802.1X
	Switch Capacity	128Gbps
	Packet Buffer	12Mb
	Packet Forwarding Rate	95.2Mpps
	MAC Address	16K
Management	Management	L2/L3 + PoE
Indicator	Power	1*red
	PoE status indicator	Green: PoE output power 0%~70% Yellow : PoE output power 70%~80% Red : PoE output power 80%~100%
	Link and PoE	Link : 28* green; PoE : 24*yellow
Protection	ESD	6KV/8KV Per: IEC61000-4-2
	Surge	6KV Per: IEC61000-4-5
Environmental	Working Temperature	-10°C~50°C fanless
	Storage Temperature	-40°C~85°C
	Humidity(non-condensing)	0~95%
Mechanical	Dimension(LxWxH)	442mm×327mm×44mm
	Material	Metal
	Color	Black
	Weight	6.5kg

Products are subject to change without prior notice.

## 2 Installation



### Caution

Anti-counterfeiting label is attached to switch's cover. Product damage caused by unauthorized disassembly is not covered under warranty.

### 2.1 Packet List

Please check the following items before installation, if any missing, please contact your local dealer.

Item	Name	Quantity	Unit
1	Switch	1	pc
2	AC Power Line	1	pc
3	Accessory	1	set
4	Quick setup wizard	1	pc

### 2.2 Installation Precautions

To avoid device damage or personal injury by improper use, please observe the following precautions.

#### 2.2.1 Safety Precautions

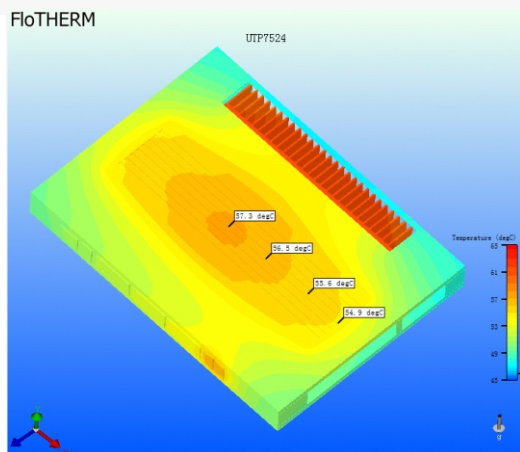


### Instruction

This is level A product, which may cause radio disturbance in living environment. Users may need to take corresponding and effective measures to solve the problem.

## Instruction

Some area in the switch maybe very hot. Please be careful to touch, be careful to burn.



- Pull out the power plug before cleaning the switch. Do not use wet cloth nor liquid to wipe or wash the switch;
- Do not leave the switch close to water or wet place so as to prevent water or dampness from entering into the switch;
- Make sure the switch work in a clean environment. Excessive dust may cause electrostatic adsorption, which will affect the equipment life and cause communication failure;
- The switch will work normally under the correct voltage. Please ensure the voltage indicated on the switch corresponds to the power voltage;
- To avoid the danger of electric shock, please do not open the switch case.

Do not open the switch case even if the switch is powered off;

## 2.2.2 Installation Requirements

The device should work in indoor environment to avoid thunder stroke. It is important to obey the following requirements no matter you install it in the cabinet or on the workbench directly:

- Enough space (larger than 10cm) for air outlet so as to facilitate the heating dissipation; Good ventilation system for cabinets and workbench is preferred;
- Ensure the Cabinet and workbench is sturdy enough to support the switch and it's accessories's weight;
- Cabinet and workbench with good grounding is preferred.

## 2.2.3 The Requirements of Electromagnetic Environment

When it is working, the switch may be affected by external interference outside the system through the ways of radiation and conduction. Please pay attention to the followings:

- AC power supply is TN system, so it is necessary to use single phase power socket (PE) which can protect ground wire so that the filter circuit can effectively filter out the power grid disturbances;
- The switch should work far away from high-power radio transmitters, radar transmitters, high-frequency devices;
- Use electromagnetic shielding if necessary, such as shielded cable;
- Interface cables should be arranged indoor rather than outdoor to prevent over-voltage or over-current damage to the signal port.

## 2.3 Installation Way

There are 3 installation ways: rack, workbench and wall-hung installation.



### Caution

Please pull out the power plug before installing or moving the switch. Grounding and anti-lightening can greatly increase the protection level of the switch. please connect the grounding terminal to the earth area by using at least wire 20.



### Instruction

The diagram is for reference only, the products are subject to actual product.

## 2.3.1 Rack Installation

Installation process:

- (1) Check rack with good grounding and stability;
- (2) Use screws to fit hangers at the device board side;

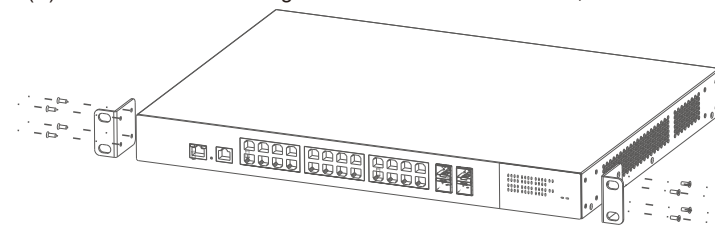


Figure 2-1 Install hangers diagram

- (3) Put the device on the rack's bracket and move the rack along the slot to proper position ;
- (4) Use screws to fit the installation hanger at rack's fixed slot, make sure the device is installed at rack's bracket steadily.

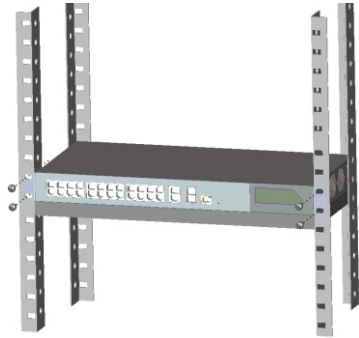


Figure 2-2 Install switch to the rack

### Instruction

This product's fixing hangers are just to fix the switch rather than support it. Use brackets under the device (fixed to the rack) to support switch when install the switch to the rack.

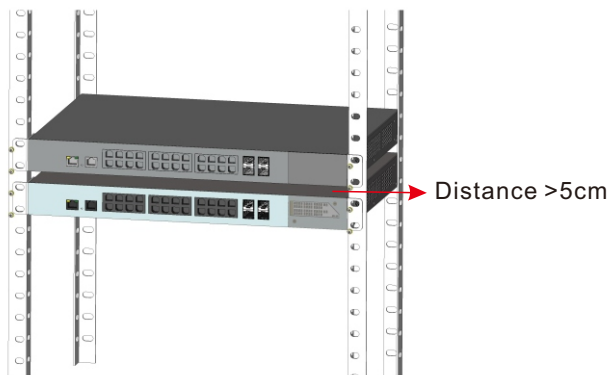


Figure 2-3 Install the second switch

### Instruction

The distance between the above switch and the below switch must be greater than 5cm. if no distance, the cooling of the switch will be affected.

## 2.3.2 Workbench Installation

You can put this product on clean, stable, grounded workbench. The installation procedure as below:

- (1) Carefully put the device upside down, clean the grooves on the chassis backplane with soft cloth to make sure there is no oil or dust in it;
- (2) Remove the stickers on the foot pad, paste the foot pad in backplane groove;
- (3) Carefully put the device upright on the workbench.

## 2.3.3 Wall-hung Installation

You also can put the product on clean, steady vertical wall. Installation procedure is below:

- (1) Use the screws to fix the hangers;



Figure 2-4 Hangers installation diagram

- (2) Drill holes on the strong position of wall and then drive the rubber plug into the hole;
- (3) Drive these screws into the hole for the rack and fix the product by aiming at the rubber plug .

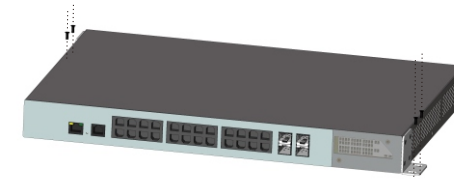


Figure 2-5 Fix the switch on wall

## 2.4 Cable Connection

### 2.4.1 Device Connection

Use cross network cable or cross-over cable to connect PC or other device with switch's Ethernet port;

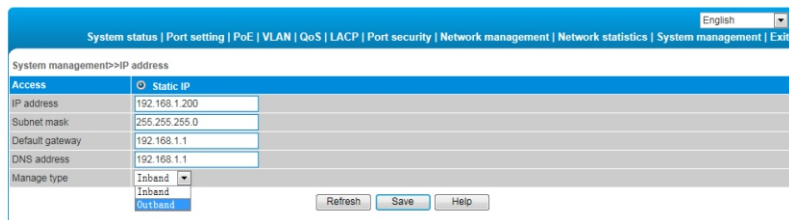
### 2.4.2 Configuration Cable Connection

If web management, use a network cable to connect the any one of 1-24 RJ45 port(Inband) and the computer' RJ45 port.

Default IP:192.168.1.200 name: admin password: admin;

The OOB port(Out of band) is only to web management. It is closed by default, it can be enable in web management, as the following figure:

Default IP: 192.168.2.200 name: admin password: admin



If CLI management, use a console cable(RJ45 to R232 serial port 115200,8,N,1) to connect the Console port and the computer's serial port(DB9); as the following figure:



Figure 2-6 Connect configuration cable

### 2.4.3 Power cable Connection

(1) Connect one side of switch's power cable with the switch's AC power port, and connect the another side with external AC power socket;

(2) Turn on the power , check if switch's AC power LED is on, that means power connected correctly;

(3) Use the power plug snap to iammed the AC Power cable.



Figure 2-7 Connect power cable

## 3 Function Configuration Guide

### 3.1 Computer Requirements

- Make sure the management PC has already been installed with Ethernet adapter;
- Use network cable connect Ethernet ports with network card of PC(Except the console port).

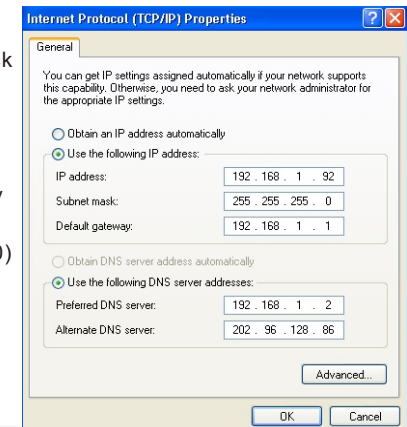
### 3.2 Set Up Network Connection

#### Instruction

- (1) You need to set the IP of the PC and the switch in the same network segment. The default IP address of the switch is 192.168.1.200, network gate is 255.255.255.0.
- (2) The port to connect management PC for Web setting must be management VLAN. By default, management VLAN is VLAN 1, and each port of the switch is VLAN1.
- (3) If you need to connect the remote network, please make sure the management PC and the router can do the job above.
- (4) This product can't assign the IP address for the management PC, you need to set the management static IP by yourself.

### Set Static IP for the Management Computer

Select "Internet protocol (TCP/IP), click <property> button, enter "Internet protocol (TCP/IP) property" window. Select " use the IP address below" button, input IP address ( use arbitrary value between 192.168.1.1~ 192.168.1.254, besides 192.168.1.200) and the subnet mask(255.255.255.0). Click "OK" to finish the configuration.



#### Instruction

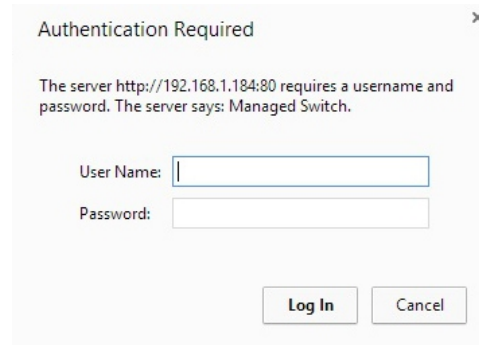
DNS server address can be empty or be filled in with the real server address.

### 3.3 Web Page Configuration Guide

The browser version recommend : IE7 and later, Firefox browser, Chrome, 360 browser (IE7 and later).

#### 3.3.1 Start and Login

This product web default IP address: 192.168.1.200, subnet mask: 255.255.255.0, administrator account: admin, password : admin. After installing the equipment correctly and setting up the computer, open the browser, input the switch default address in the browser address bar: <http://192.168.1.200>, then press the Enter key, the user login page will show in front of you as follows:



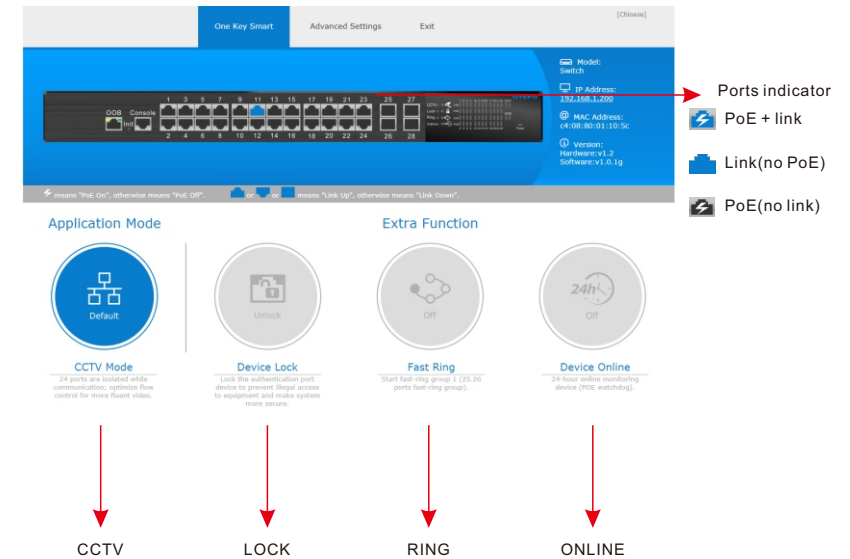
#### Caution

Please follow the steps to check if the switch is installed correctly:

- (1) Whether the physical connection of the equipment is correct?  
Use network cable to connect the product's Ethernet port(except the console port) with managed computer network card, and ensure the link LED of the port is on.
- (2) Whether the computer TCP/IP agreement setting is correct?  
Your computer's IP address must be 192.168.1.x (x range is 1~254 and x can not be 200, otherwise it will conflict with the product IP address 192.168.1.200 ), subnet mask: 255.255.255.0.
- (3) Whether the computer's port VLAN ID is 1?  
By default, the management VLAN is VLAN 1, same as each port of switch.




After inputting the correct password, click <Login in>, the browser will display the product Web management page.

#### 3.3.2 One-key smart introduction



One-key smart web management page diagram

(1)Ports indicator:  
the switch diagramm can show the ports link and PoE-output status.

-  PoE + link
-  Link(no PoE)
-  PoE(no link)

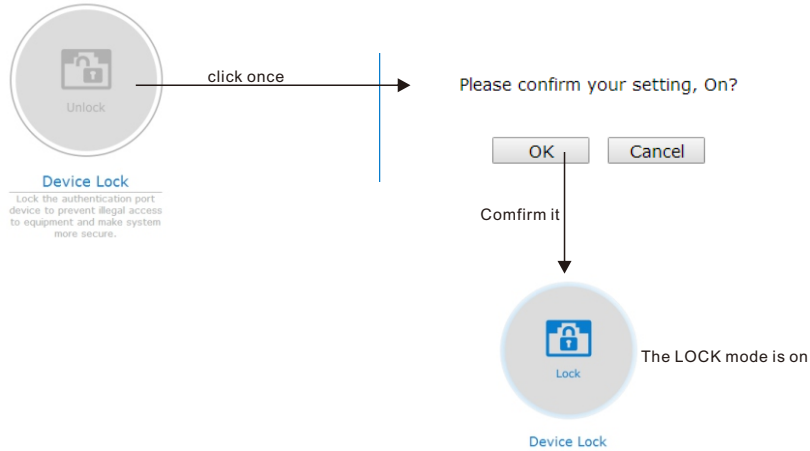


(2) 4\* One-key smart web operation

User can operate the one-key smart mode on and off on the web.  
click the CCTV\LOCK\RING\ONLINE icon,the mode is on.

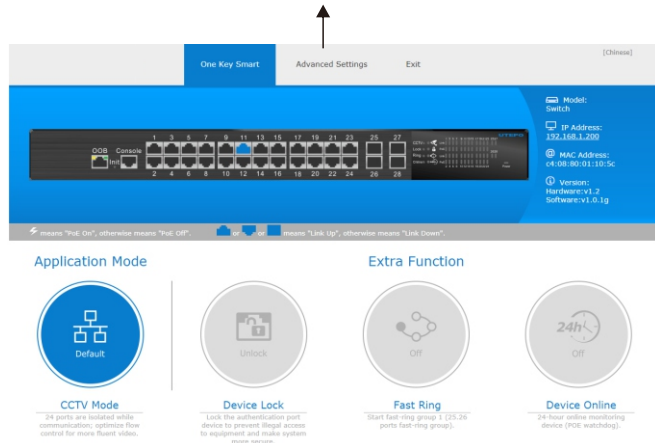
Then click second time,the mode is off.The mode status is synchronized with the switch panel.

We will introduce LOCK as an example blew.

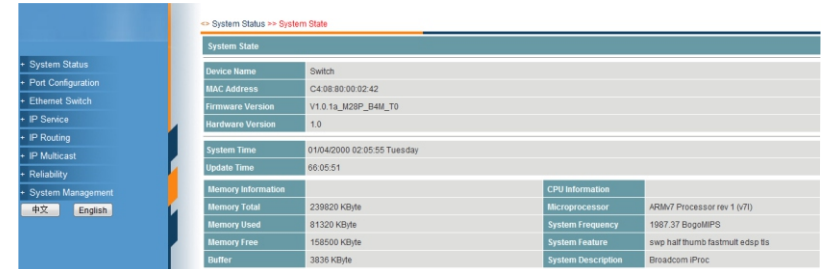


(3) Switch to Advance settings

Click the "Advance settings" icon,it switch to the advance settings.



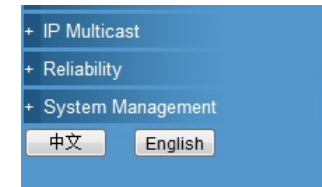
(4) Advance settings



Web management page diagram

3.3.3 Change Language

As shown below, in the upper right corner of the Web page, click on the drop-down menu bar, select [Chinese] or [English], to complete Web language switching.



Web English language switching page diagram

## Environment protection

This product design is environmental friendly and the product should be stored, used and discarded in accordance with relevant national legal / regulatory requirements.